

**DESCRIPTION**

Specificity	Inhibin Alpha
Source	Murine
Product Form / Appearance	Clear, Colorless solution
Product Type	Monoclonal Antibody
Isotype	IgG2a
Package Size	100 µg

**SPECIFICATIONS**

Species Reactivity	Human, Rat, Mouse
Immunogen	Inhibin Alpha
Purification	Purified from hybridoma culture supernatant using Protein G.
Concentration	Batch Specific – refer to Certificate of Analysis report
Activity	Determined by direct ELISA
Composition	Phosphate Buffered Saline, 10mM, pH 7.4 (no preservatives)

**PREPARATION AND STORAGE**

Reconstitution	Not Applicable. Provided in liquid format.
Shipping Conditions	This product is shipped on dry ice. Upon receipt, store it immediately at the temperature recommended below.
Storage	Store at -20°C to -80°C as supplied. Avoid repeated freeze-thaw cycles.

**APPLICATIONS**

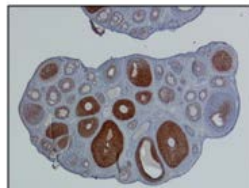
This product has been reported to work in the following applications. This information is derived from testing within our laboratory, peer-reviewed publications or personal communications from the originators. Optimal dilutions should be determined by each laboratory for each application.

	Status	Recommended Concentration
ELISA	Recommended	10 µg/mL
Western Blotting	Recommended	1 µg/mL
Immunohistochemistry	Recommended	1-5 µg/mL

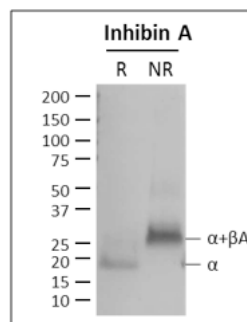
Neutralizing Ab

**APPLICATION IMAGES**
**Immunohistochemistry: 1-5 µg/mL**

This antibody detects inhibin  $\alpha$  in formalin or Bouin-fixed rat and mouse ovary sections. Bouin-fixed, paraffin embedded sections of Rat ovaries stained with 3.4 µg/mL inhibin  $\alpha$  antibody.


**Western Blotting: 1 µg/mL**

Inhibin  $\alpha$  mAb detects precursor and mature inhibin  $\alpha$  forms. Under reducing (R) conditions this antibody detects the 20 kDa inhibin  $\alpha$  monomer in CHO cell supernatants expressing inhibin A ( $\alpha$ + $\beta$ A heterodimer). Under non-reducing (NR) conditions this antibody detects the 34 kDa inhibin A ( $\alpha$ + $\beta$ A heterodimer).



**REFERENCES OR CITATIONS**

Conover CA, Bale LK, Frye RL, Schaff HV. Cellular characterization of human epicardial adipose tissue: highly expressed PAPP-A regulates insulin-like growth factor I signaling in human cardiomyocytes. *Physiol Rep*. 2019;7(4):e14006. doi:10.14814/phy2.14006

Jana A, Das A, Krett NL, Guzman G, Thomas A, Mancinelli G, Bauer J, Ushio-Fukai M, Fukai T, Jung B. Nuclear translocation of Atox1 potentiates activin A-induced cell migration and colony formation in colon cancer. *PLoS One*. 2020 Jan 21;15(1):e0227916. doi: 10.1371/journal.pone.0227916.

Lambert-Messerlian G, Steinhoff M, Kumar A, Eklund EE, Moore R. Comparison of Inhibin Alpha Subunit and Antimüllerian Hormone Immunoreactivity in Granulosa Cell and Mucinous Ovarian Tumors. *Appl Immunohistochem Mol Morphol*. 2017 Jan;25(1):71-77. doi: 10.1097/PAI.0000000000000251.

Lilja-Maula L, Syrjä P, Laurila HP, Sutinen E, Palviainen M, Ritvos O, Koli K, Rajamäki MM, Myllärniemi M. Upregulation of alveolar levels of activin B, but not activin A, in lungs of west highland white terriers with idiopathic pulmonary fibrosis and diffuse alveolar damage. *J Comp Pathol*. 2015 Feb-Apr;152(2-3):192-200. doi: 10.1016/j.jcpa.2014.11.006.

Mancinelli G, Torres C, Krett N, Bauer J, Castellanos K, McKinney R, Dawson D, Guzman G, Hwang R, Grimaldo S, Grippo P, Jung B. Role of stromal activin A in human pancreatic cancer and metastasis in mice. *Sci Rep*. 2021 Apr 12;11(1):7986. doi: 10.1038/s41598-021-87213-y.

Myllärniemi M, Tikkanen J, Hulmi JJ, Pasternack A, Sutinen E, Rönty M, Leppäranta O, Ma H, Ritvos O, Koli K. Upregulation of activin-B and follistatin in pulmonary fibrosis - a translational study using human biopsies and a specific inhibitor in mouse fibrosis models. *BMC Pulm Med*. 2014 Nov 1;14:170. doi: 10.1186/1471-2466-14-170.

Tamminen JA, Yin M, Rönty M, Sutinen E, Pasternack A, Ritvos O, Myllärniemi M, Koli K. Overexpression of activin-A and -B in malignant mesothelioma - attenuated Smad3 signaling responses and ERK activation promote cell migration and invasive growth. *Exp Cell Res*. 2015 Mar 1;332(1):102-15. doi: 10.1016/j.yexcr.2014.12.010.

Thomas AL, Castellanos K, Mancinelli G, Xia Y, Bauer J, Yazici C, Fantuzzi G, Hwang RF, Krett NL, Papachristou GI, Whitcomb DC, Jung B. Activin A Modulates Inflammation in Acute Pancreatitis and Strongly Predicts Severe Disease Independent of Body Mass Index. *Clin Transl Gastroenterol*. 2020 May;11(5):e00152. doi: 10.14309/ctg.0000000000000152.