

## DESCRIPTION

Specificity	Anti-Müllerian Hormone (Pro Region)
Source	Murine
Product Form / Appearance	Clear, Colorless solution
Product Type	Monoclonal Antibody
Isotype	IgG2b
Package Size	100 µg

## SPECIFICATIONS

Species Reactivity	Human, Mouse, Equine
Immunogen	Recombinant Anti-Müllerian hormone
Purification	Purified from hybridoma culture supernatant using Protein G.
Concentration	Batch Specific – refer to Certificate of Analysis report
Activity	Determined by direct ELISA
Composition	Reconstitute to the appropriate working dilution for your intended application using 10mM Phosphate Buffered Saline at pH7.4 without preservatives.

## PREPARATION AND STORAGE

Reconstitution	Not Applicable. Provided in liquid format.
Shipping Conditions	This product is shipped on dry ice. Upon receipt, store it immediately at the temperature recommended below.
Storage	Store at -20°C to -80°C as supplied. Avoid repeated freeze-thaw cycles.

## APPLICATIONS

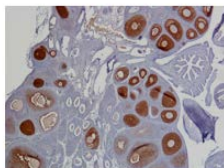
This product has been reported to work in the following applications. This information is derived from testing within our laboratory, peer-reviewed publications or personal communications from the originators. Optimal dilutions should be determined by each laboratory for each application.

	Status	Recommended Concentration
ELISA	Recommended	10 µg/mL
Western Blotting	Recommended	1-5 µg/mL
Immunohistochemistry	Recommended	1-10 µg/mL

## APPLICATION IMAGES

### Immunohistochemistry: 15 µg/mL

AMH was detected in formalin fixed rat ovaries using AB-303-AA024 at 15 µg/mL



## REFERENCES OR CITATIONS

Bøtkjær JA, Jeppesen JV, Wissing ML, Kløverpris S, Oxvig C, Mason JI, Borgbo T, Andersen CY. Pregnancy-associated plasma protein A in human ovarian follicles and its association with intrafollicular hormone levels. *Fertil Steril*. 2015 Nov;104(5):1294-301.e1. doi: 10.1016/j.fertnstert.2015.07.1152.

Lambert-Messerlian G, Steinhoff M, Kumar A, Eklund EE, Moore R. Comparison of Inhibin Alpha Subunit and Antimüllerian Hormone Immunoreactivity in Granulosa Cell and Mucinous Ovarian Tumors. *Appl Immunohistochem Mol Morphol*. 2017 Jan;25(1):71-77. doi: 10.1097/PAI.0000000000000251.

Mamsen LS, Bøtkjær JA, Kristensen SG, Pors SE, Jeppesen JV, Kumar A, Kalra B, Ernst E, Andersen CY. High Variability of Molecular Isoforms of AMH in Follicular Fluid and Granulosa Cells From Human Small Antral Follicles. *Front Endocrinol (Lausanne)*. 2021 Mar 2;12:617523. doi: 10.3389/fendo.2021.617523.

Mamsen LS, Kelsey TW, Ernst E, Macklon KT, Lund AM, Andersen CY. Cryopreservation of ovarian tissue may be considered in young girls with galactosemia. *J Assist Reprod Genet*. 2018 Jul;35(7):1209-1217. doi: 10.1007/s10815-018-1209-2.

Mamsen LS, Petersen TS, Jeppesen JV, Møllgård K, Grøndahl ML, Larsen A, Ernst E, Oxvig C, Kumar A, Kalra B, Andersen CY. Proteolytic processing of anti-Müllerian hormone differs between human fetal testes and adult ovaries. *Mol Hum Reprod*. 2015 Jul;21(7):571-82. doi: 10.1093/molehr/gav024.