

Pregnancy-associated plasma protein A (PAPP-A) is a large placenta-derived glycoprotein. During pregnancy it is produced in high concentrations by the trophoblast and released into maternal circulation. In addition to trophoblasts, PAPP-A expression has been reported in various tissues, including endometrium, testis, atherosclerotic arteries, kidney, bone, colon, and other adult and fetal tissue. PAPP-A is potentially proatherosclerotic and has been proposed as a new marker of inflammation, as high serum PAPP-A levels are observed in patients with renal impairment, asthma, lung cancer, unstable angina, etc. Studies suggest that the PAPP-A form in non-pregnant females and males is dimeric and is not complexed with proMBP and proteolyzes IGFBP-4 and IGFBP-5.

Ansh Labs Advantage

Analytical measurable range of approximately 37—7480 ng/mL

wide dynamic range for studies of a variety of physiological states

Detects the heterotetrameric form and homodimeric form of PAPP-A equimolarly

reliable measurement in studies of pregnant or non-pregnant subjects

Sensitive to 10 ng/mL

Total 3 hour incubation at room temperature

same day results

Long shelf-life

minimizing lot changes ensures long-term consistency and precision of results

Automation ready

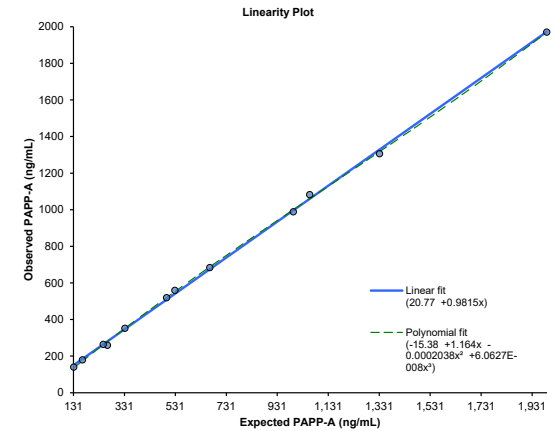
simple procedure is automatable on most robotic platforms



The Difference is in the Results. Go Ahead. Test Us!

Accurate

Standardized recombinant human PAPP-A calibrators



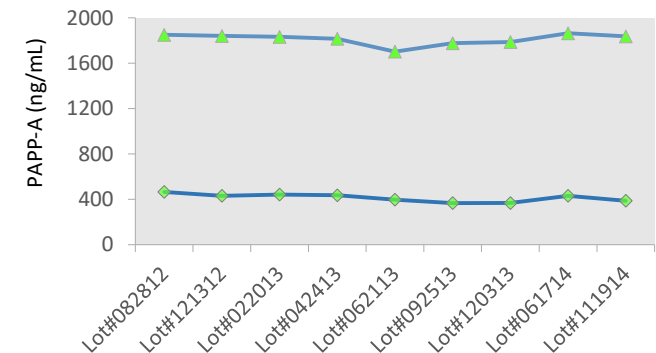
Specific

Cross reactivity was studied by adding the following compounds (1-5) to the PAPP-A calibrator A (0 ng/mL) and the interference was studied by spiking the following compounds (5) in serum samples at the concentration listed to the right.

Cross-reactant	Concentration (ng/mL)	% Cross-reactivity
PAPP-A2	50	ND
proMBP	50	ND
MMP-9	50	ND
PAPP-A proMBP Complex	50	100
Dimeric PAPP-A	50	100

Reliable

Excellent precision and consistency of performance from assay-to-assay, lot-to-lot and lab-to-lab.



PAPP-A

PAPP-A is a useful research tool in Reproductive Endocrinology studies related to:

- Ovarian function assessment
- Pregnancy complications
- Inflammation
- Renal Impairment
- Asthma
- Lung Cancer
- Unstable angina

	ELISA 96 Wells	CLIA 96 Wells
Method	Quantitative two-step sandwich type immunoassay	
Incubation Time	Total 3 hour incubation at room temperature	
Approximate Dynamic Range	6 points, 37-7480 ng/mL	6 points, 25-5000 ng/mL
Sensitivity	10.1 ng/mL	7.73 ng/mL
Sample Size / Type	10 µL / Serum	10 µL / Serum
Shelf-life	24 months	24 months

Ordering Information

PAPP-A	96-Well ELISA	AL-106*
PAPP-A	96-Well CLIA	AL-206*

* Unless otherwise stated in our catalog or other product documentation, these kits are intended for research use only and not for *in vitro* diagnostic purposes or therapeutic uses



ISO 13485:2016

Additionally, we have many monoclonal antibodies to AMH, PAPP-A, Inhibin B and other hormones in the TGF-beta superfamily.

Call us today or visit AnshLabs.com to see what's new in our lab.

Ansh Labs is ISO 13485 certified for design, development, manufacturing, services and distribution of reagents/ immunoassay kits for research and *in vitro* diagnostic applications.

Customer Relations
281.404.0260, Ext. 263
sales@anshlabs.com

Sales
281.404.0260
sales@anshlabs.com

Product Listing*

TGF-Beta Superfamily
Activin A
Activin B
Activin AB
AFP
AMH
AMH, Dried Blood Spot
picoAMH (MenoCheck)
Estriol
Follistatin
Follistatin Like 3
FSH
FSH, Dried Blood Spot
GDF-9
hCG, Intact
Inhibin, Total
Inhibin A
Inhibin B
Inhibin B, Ultra-Sensitive
LH
LH, Dried Blood Spot
PAPP-A
picoPAPP-A
PAPP-A2

Glucagon Regulation
C-Peptide of Insulin
Glicentin
GLP-1
GLP-2
Glucagon
Major Proglucagon Fragment
Oxyntomodulin

Growth Factors
IGF-I, Free
IGF-I, Total
IGF-II
IGFBP-2
IGFBP-3, Intact
IGFBP-3, Total
IGFBP-4, Intact
IGFBP-4, Total
IGFBP-5
Stanniocalcin 2

Neuronal Disorders
MBP

Specialty Controls
Ansh/Check AMH Tri-Level Controls
Ansh/Check Inhibin B Tri-Level Controls
Ansh/Check Maternal Screening Bi-Level Controls

Species Specific Assays
Activin B - Mouse
AMH - Bovine, Canine, Caprine, Equine, Mouse, Ovine, Porcine, Rat
IGF-I, Free - Rat and Mouse
IGF-I, Total - Mouse, Rat
Inhibin A - Canine, Equine, Rodent
Inhibin B - Canine, Equine, Rodent
Oxyntomodulin - Rat, Mouse
PAPP-A - Mouse

* Unless otherwise stated in our catalog or other product documentation, these kits are intended for research use only and not for *in vitro* diagnostic purposes or therapeutic uses



The Difference is in the Results. **Go Ahead. Test Us!**

445 Medical Center Blvd. Webster, TX 77598 • U.S.A.
AnshLabs.com

Copyright ©2020 Ansh Labs. All rights reserved. POS.106206.0320.US