

# PAPP-A

Enzyme-Linked Immunoassay Kit

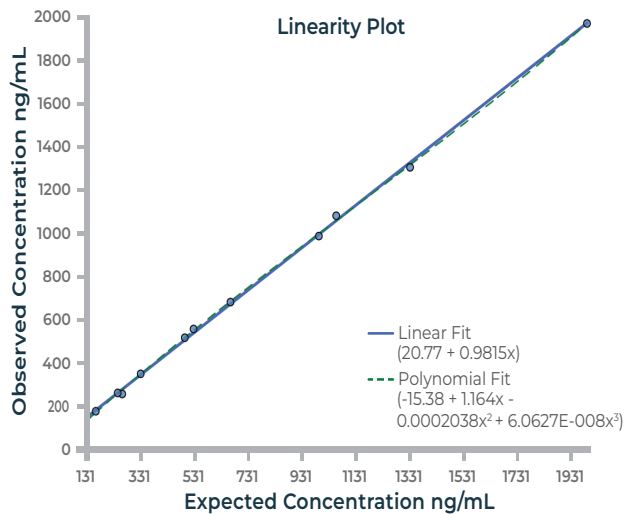


**Introduction:** Pregnancy-associated plasma protein A (PAPP-A) is a large placenta-derived glycoprotein. During pregnancy it is produced in high concentrations by the trophoblast and released into maternal circulation. In addition to trophoblasts, PAPP-A expression has been reported in various tissues, including endometrium, testis, atherosclerotic arteries, kidney, bone, colon, and other adult and fetal tissue. PAPP-A is potentially proatherosclerotic and has been proposed as a new marker of inflammation, as high serum PAPP-A levels are observed in patients with renal impairment, asthma, lung cancer, unstable angina, etc. Studies suggest that the PAPP-A form in non-pregnant females and males is dimeric and is not complexed with proMBP and proteolyzes IGFBP-4 and IGFBP-5.

## ANSH LABS ADVANTAGES

### Accurate

Standardized recombinant human PAPP-A calibrators.



**Detects the heterotetrameric form and homodimeric form of PAPP-A equimolarly**

Reliable measurement in studies of non-pregnant or pregnant subjects

**Analytical measurable range of approximately 18-3300 ng/mL**

Wide dynamic range for detection of Proglucagon studies of a variety of physiological states.

**Sensitive to 1.14 ng/mL**

**Automation ready**

Simple procedure is automatable on most robotic platforms.

**Long shelf-life**

Minimizing lot changes ensures long-term consistency and precision of results

### Specific

Cross reactivity was studied by adding the following compounds (1-5) to the PAPP-A calibrator A (0 ng/mL) and the interference was studied by spiking the following compounds (5) in serum samples at the concentration listed to the right in the table.

Sample Name	% Cross-reactivity
PAPP-A2	ND
ProMBP	ND
MMP-9	ND
PAPP-A proMBP Complex	100
Dimeric PAPP-A	100

# PAPP-A

## Product Listing

### PAPP-A is a useful research tool in studies related to:

- Asthma
- Lung Cancer
- Inflammation
- Unstable Angina
- Renal Impairment
- Pregnancy Complicationst
- Ovarian function assessment

## ELISA 96 Wells

Method	Quantitative 2-step sandwich type immunoassay
Incubation Time	Total 3 hour incubation at room temperature
Approximate Dynamic Range	6 points, 18-3300 ng/mL
Sensitivity	1.14 ng/mL
Sample Size / Type	10 µL / Serum
Shelf-life	24 months
Catalog Number	AL-106

## Related Assays

picoPAPP-A      96-Well ELISA      AL-101

Ansh Labs is trusted by the top global pharma companies, scientists and researchers for highly-specific and well-characterized monoclonal antibodies. We offer numerous antibodies for PAPP-A including the extremely popular PAPP-A clone 1/41 neutralizing antibody.

\*Unless otherwise stated here, in our catalog, or other product documentation, these kits are intended for research use only and not for in vitro diagnostic purposes or therapeutic uses.

POS.106.1222.USINTL

### Reproductive Function

- Activin A [CE]
- Activin B
- Activin AB
- AFP
- AMH [CE]
- AMH, Dried Blood Spot [CE]
- AMH (PCOCheck™) [CE]
- picoAMH (MenoCheck®) [FDA, CE]
- BMP-15
- Estriol [FDA, CE]
- Follistatin
- Follistatin Like-3 (FSTL-3)
- FSH [FDA]
- FSH, Dried Blood Spot
- GDF-9
- GDF-9/BMP-15 Complex
- GDF-15 (Total)
- GDF-15 (H-Specific)
- Inhibin, Total
- Inhibin A [FDA, CE]
- picoInhibin A
- Inhibin A (OMQCheck™)
- Inhibin B [CE]
- Inhibin B, Ultra-Sensitive [CE]
- LH [FDA]
- LH, Dried Blood Spot
- PAPP-A2 [CE]
- picoPAPP-A [CE]
- PLGF [CE]
- Prolactin [FDA, CE]
- Prolactin, Dried Blood Spot [CE]
- Testosterone

### Specialty Controls

- AnshCheck AMH Tri-Level Controls [FDA, CE]
- AnshCheck Inhibin B Tri-Level Controls
- AnshCheck Maternal Screening Bi-Level Controls [FDA, CE]

### Metabolism

- C-Peptide of Insulin
- Glucagon
- GLP-1
- GLP-2
- Glucagon [FDA, CE]
- Major Proglucagon Fragment (MPGF)
- Oxyntomodulin
- Proglucagon

### Growth Factors

- IGF-I, Free
- IGF-I, Total [FDA, CE]
- IGF-II
- IGFBP-2
- IGFBP-3, Intact
- IGFBP-3, Total
- IGFBP-4, Intact
- IGFBP-4, Total
- IGFBP-5
- picoIL-6
- Stanniocalcin 2

### Species Specific Assays

- Activin B - Mouse
- AMH - Bovine, Canine, Equine, Mouse, Ovine, Porcine, Rat
- IGF-I, Free - Mouse, Rat
- IGF-I, Total - Mouse, Rat
- Inhibin A - Canine, Equine, Rodent
- Inhibin B - Canine, Equine, Rodent
- Oxyntomodulin - Mouse, Rat
- PAPP-A - Mouse

### Neuronal Disorders

- MBP

\*\*Unless stated otherwise, products are for research use only.

### Customer Relations

281.404.0260, Ext. 263  
sales@anshlabs.com

445 Medical Center Blvd.  
Webster, Texas 77598 USA



Call us today, or visit us at [AnshLabs.com](https://www.anshlabs.com) to see what's new in our lab.

Copyright ©2023 Ansh Labs. All rights reserved.



ISO 13485:2016

Ansh Labs is ISO certified for the design, development, manufacturing, services and distribution of reagents/ immunoassay kits for research and in-vitro diagnostic applications.