

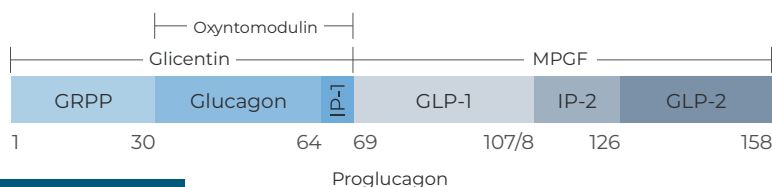
# Oxyntomodulin

Enzyme-Linked Immunoassay Kit



**Introduction:** The 37 amino acid peptide hormone Oxyntomodulin is secreted by the gut endocrine L-cells post-prandially. Oxyntomodulin is therapeutically used to lower glucose levels and suppress appetite resulting in weight loss. Oxyntomodulin and the closely related glucagon and glicentin peptides are generated from differential processing of proglucagon. Due to the sequence similarity in proglucagon-derived peptides, designing specific immunoassays for Oxyntomodulin is a challenge. Additionally, low circulating levels necessitate highly sensitive assays.

A 2014 study by Jens J Holst's group in Denmark evaluated several commercially available immunoassays and concluded that none of the assays could measure human Oxyntomodulin with any reliability<sup>1</sup>. In consultation with several key opinion leaders, Ansh Labs has screened countless monoclonal antibodies and tested numerous assay validation protocols to identify the optimal antibody pair. Today, a few years after the product introduction, our Oxyntomodulin ELISA has been used in numerous studies and has become the gold standard assay allowing researchers to accurately quantify Oxyntomodulin.



## ANSH LABS ADVANTAGES

### Specific

No cross-reactivity with several proglucagon-derived peptides. Cross-reactivity data against common Glucagon drugs is listed in the IFU.

Sample Name	% Cross-reactivity
Glucagon (1-29)	ND
GLP-1 (7-36)	ND
GLP-1 (9-36)	ND
GLP-2 (1-34)	ND
Glicentin	5
GRPP	ND
MPGF-2	ND
Insulin	ND
C-Peptide	ND
Thyroglobulin	ND
Pro-glucagon KO Serum	ND
Wild Type Mice Serum	100
Oxyntomodulin (1-37)	100

### Reliable

Twenty five K2EDTA plasma samples in the range of 100-1600 pg/mL were aliquoted stored at -80°C for 14 days and compared to freshly drawn plasma samples in Oxyntomodulin ELISA assay (AL-139).

K2EDTA Plasma (Freshly Drawn) = 1.09 (14 Days, -80°C) – 2.99 pg/mL

Measures total Oxyntomodulin molecule (1-37)

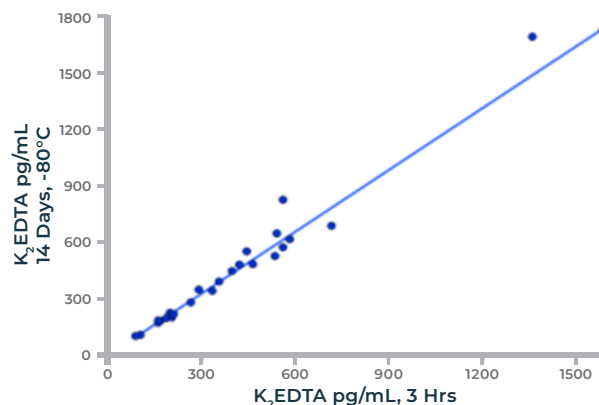
Simple dilution from 20 µL sample, no extraction needed  
Avoids time consuming extractions or buying additional reagents.

Analytical measurable range of 3-290 pg/mL  
Wide dynamic range reduces repeat testing of samples.

Sensitive to 0.243 pg/mL

Kit includes all reagents needed to run a 96-well plate, shipped at ambient temperatures and stored at 2-8°C  
No need to store specific reagents under different temperature conditions.

Long shelf-life



# Oxyntomodulin

## Product Listing

Oxyntomodulin is a useful research tool in Metabolism studies related to:

- Insulin sensitivity
- Obesity, satiety and appetite control
- GLP-1 / Glucagon receptor activation and regulation

## ELISA 96 Wells

Method	Quantitative 2-step sandwich type immunoassay
Incubation Time	Total 2.5 hour incubation at room temperature
Approximate Dynamic Range	6 points, 3-290 pg/mL
Sensitivity	0.243 pg/mL
Sample Size / Type	20 µL / EDTA Plasma (non-extraction)
Shelf-life	24 months
Catalog Number	AL-139

## Related Assays

Rat/Mouse Oxyntomodulin	96-Well ELISA	AL-192
C-Peptide of Insulin	96-Well ELISA	AL-151
Glicentin	96-Well ELISA	AL-185
GLP-1	96-Well ELISA	AL-172
GLP-2	96-Well ELISA	AL-174
Glucagon	96-Well ELISA	AL-157 [FDA, CE]

References:  
Eur J Endocrinol. 2014 Mar 8;170(4):529-38

\*Unless otherwise stated here, in our catalog, or other product documentation, these kits are intended for research use only and not for in vitro diagnostic purposes or therapeutic uses.

POS.139.1224.USINTL

### Reproductive Function

Activin A [CE]  
Activin B  
Activin AB  
AFP  
AMH [CE]  
AMH, Dried Blood Spot [CE]  
AMH (PCOCheck™) [CE]  
picoAMH (MenoCheck®) [FDA, CE]  
BMP-15  
Estriol [FDA, CE]  
Follistatin  
Follistatin Like-3  
FSH  
FSH, Dried Blood Spot  
GDF-9  
GDF-9/BMP-15 Complex  
GDF-15, Total  
GDF-15, H-Specific  
Inhibin, Total  
Inhibin A [FDA, CE]  
picoInhibin A  
Inhibin A (OMQCheck™)  
Inhibin B [CE]  
Inhibin B, Ultra-Sensitive [CE]  
LH  
LH, Dried Blood Spot  
PAPP-A [CE]  
PAPP-A2 [CE]  
picoPAPP-A [CE]  
PLGF [CE]  
Prolactin [FDA, CE]  
Prolactin, Dried Blood Spot [CE]

### Specialty Controls

AnshCheck AMH Tri-Level Controls [FDA, CE]  
AnshCheck Inhibin B Tri-Level Controls  
AnshCheck Maternal Screening Bi-Level Controls [FDA, CE]

### Metabolism

C-Peptide of Insulin  
GIP, Intact  
GIP, Total  
Glicentin  
GLP-1  
GLP-2  
Glucagon [FDA, CE]  
Major Proglucagon Fragment  
Oxyntomodulin  
Proglucagon

### Growth Factors

IGF-I, Free  
IGF-I, Total [FDA, CE]  
IGF-II  
IGFBP-2  
IGFBP-3, Intact  
IGFBP-3, Total  
IGFBP-4, Intact  
IGFBP-4, Total  
IGFBP-5  
picolL-6  
Stanniocalcin 2

### Species Specific Assays

Activin B: Mouse, Rat  
AMH: Bovine, Canine, Equine, Feline, Mouse, Ovine, Porcine, Primate, Rat  
GDF-15: Bovine  
IGF-I, Free: Mouse, Rat  
IGF-I, Total: Mouse, Rat  
IGFBP-4, Intact : Mouse, Rat  
IGFBP-4, Total: Mouse, Rat  
Inhibin A: Canine, Equine, Rodent  
Inhibin B: Canine, Equine, Mouse  
Oxyntomodulin: Mouse, Rat  
PAPP-A: Mouse

### Neuronal Disorders

MBP

\*\*Unless stated otherwise, products are for research use only.

### Customer Relations

281.404.0260, Ext. 263  
sales@anshlabs.com

445 Medical Center Blvd.  
Webster, Texas 77598 USA



Call us today, or visit us at [AnshLabs.com](https://www.anshlabs.com)

Copyright ©2024 Ansh Labs. All rights reserved.



ISO 13485:2016

Ansh Labs is ISO certified for the design, development, manufacturing, services and distribution of reagents/ immunoassay kits for research and in vitro diagnostic applications.