

Anti-Müllerian hormone is a 140 kDa glycoprotein that is produced during normal embryogenesis by the sertoli cells of the embryonic testis. It causes the involution of the müllerian duct and inhibits female gonadogenesis by inducing apoptosis of target gonadal cells. It belongs to the transforming growth factor- β super family. AMH causes apoptosis of specific müllerian inhibiting substance (MIS) receptor-bearing cells, while having no effect on cells without receptors.

AMH concentration in a sample does not appear to be impacted significantly by normal storage and transportation conditions if proper sample collection practices are adhered. AMH assays are a useful research tool in reproductive endocrinology.

Ansh Labs Advantage

Standardized recombinant human AMH calibrators ensure accuracy and reproducibility assay-to-assay and lot-to-lot

Unique mAbs developed against specific linear epitopes on the associated dimers of AMH specificity and consistency of AMH detection

Specific to human AMH (associated form) detects the full length and enhanced biologically active associated forms of human AMH

Analytical measurable range of 0.08—14.2 ng/mL wide dynamic range reduces repeat testing of samples

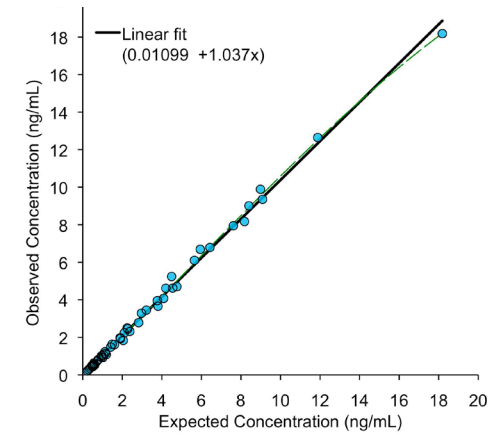
Sensitive to ~23 pg/mL improved detection rate in research studies of compromised gonadal function



The Difference is in the Results. **Go Ahead. Test Us!**

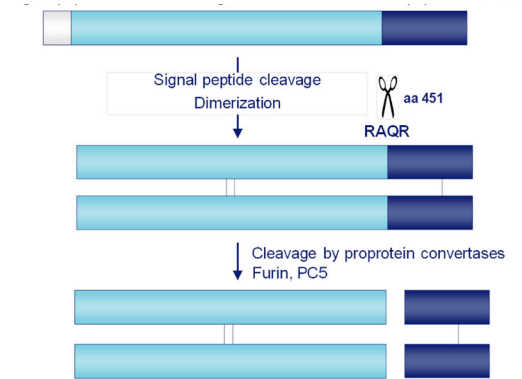
Accurate

Standardized recombinant human AMH calibrators



Specific

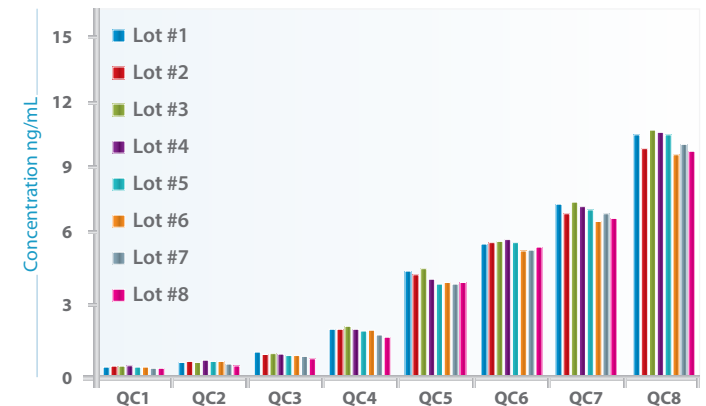
Specific to the full length and cleaved complex forms of AMH



Pepinski, R.B., et al. (1988) J. Biol. Chem., 263, 18961-18964.

Reliable

Excellent precision and consistency of performance from assay-to-assay, lot-to-lot and lab-to-lab



Anti-Müllerian Hormone

AMH is a useful research tool in Reproductive Endocrinology studies related to:

- Primary ovarian insufficiency
- Oncofertility
- Gonadotoxicity
- Menopause
- Premature ovarian aging
- PCOS - biochemical feature of polycystic ovary syndrome
- Neonatal gender determination
- Cryptorchidism
- Testicular (Leydig/Sertoli cell) function

	ELISA 96 Wells	CLIA 96 Wells
Method	Quantitative three-step sandwich type immunoassay	
Incubation Time	Total 2.5 hour incubation at room temperature	
Approximate Dynamic Range	6 points, 0.08 - 14.2 ng/mL	6 points, 0.09 - 20.2 ng/mL
Limit of Detection	0.023 ng/mL	0.029 ng/mL
Sample Size / Type	25 µL / Serum, Plasma	50 µL / Serum, Plasma
Shelf-life	24 months	24 months

Ordering Information

AMH, Ultra Sensitive 96-Well CLIA	AL-205*
AMH, Ultra Sensitive 96-Well ELISA	AL-105*
picoAMH 96-Well ELISA	AL-124*
Ansh✓Check™ AMH Tri-Level Controls	AL-CTR-401*

* Unless otherwise stated in our catalog or other product documentation, these kits are intended for research use only and not for *in vitro* diagnostic purposes or therapeutic uses



ISO 9001:2008
ISO 13485:2003

Ansh Labs is ISO 13485 and ISO 9001 certified for design, development, manufacturing, services and distribution of reagents/immunoassay kits for research and *in vitro* diagnostic applications.

Additionally, we have proteins and many monoclonal antibodies to Inhibin B and other hormones in the TGF-beta superfamily.

Call us today or visit AnshLabs.com to see what's new in our lab.

Customer Relations

281.404.0260, Ext. 263
sales@anshlabs.com

Sales

281.404.0260, Ext. 276
sales@anshlabs.com

Product Listing*

TGF-Beta Superfamily

- Activin A
- Activin B
- Activin AB (in development)
- AMH
- AMH, Dried Blood Spot
- picoAMH
- BMP-15 (in development)
- Glycosylated Fibronectin
- Follistatin
- Follistatin Like 3
- GDF-9 (in development)
- Inhibin A
- Inhibin B
- Total Inhibin
- BMP-15/GDF-9 Heterodimer Complex (in development)

Glucagon Regulation

- C-Peptide of Insulin
- GLP-1
- GLP-2 (in development)
- Glucagon
- Oxyntomodulin

Pappalysins Family

- PAPP-A
- picoPAPP-A
- PAPP-A / Stanniocalcin 2 Complex
- PAPP-A2

Growth Factors

- Bioactive IGF-I
- Total IGF-I
- IGF-II
- IGFBP-2
- Intact IGFBP-3
- Total IGFBP-3
- Intact IGFBP-4
- Total IGFBP-4
- IGFBP-5
- Stanniocalcin 2

Specialty Controls

- Ansh✓Check AMH Tri-Level Controls
- Ansh✓Check Inhibin B Tri-Level Controls

Species Specific Assays

- Activin B - Mouse
- AMH - Bovine, Canine, Caprine, Equine, Mouse, Ovine, Porcine, Rat
- IGF-I (Total) - Rat and Mouse
- IGF-I (Bioactive) - Mouse, Rat
- Inhibin A - Canine, Equine, Rodent
- Inhibin B - Canine, Equine, Rodent
- PAPP-A - Mouse

Neuronal Disorders

- MBP

* Unless otherwise stated in our catalog or other product documentation, these kits are intended for research use only and not for *in vitro* diagnostic purposes or therapeutic uses



The Difference is in the Results. Go Ahead. Test Us!

445 Medical Center Blvd. Webster, TX 77598 • U.S.A.

AnshLabs.com