

Anti-Müllerian Hormone (AMH)

Enzyme-Linked Immunoassay Kit



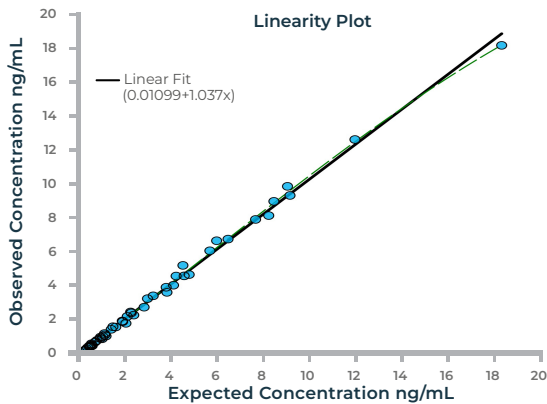
Introduction: Anti-Müllerian hormone is a 140 kDa glycoprotein that is produced during normal embryogenesis by the sertoli cells of the embryonic testis. It causes the involution of the müllerian duct and inhibits female gonadogenesis by inducing apoptosis of target gonadal cells. It belongs to the transforming growth factor- β super family. AMH causes apoptosis of specific müllerian inhibiting substance (MIS) receptor-bearing cells, while having no effect on cells without receptors.

AMH concentration in a sample does not appear to be impacted significantly by normal storage and transportation conditions if proper sample collection practices are followed.

ANSH LABS ADVANTAGES

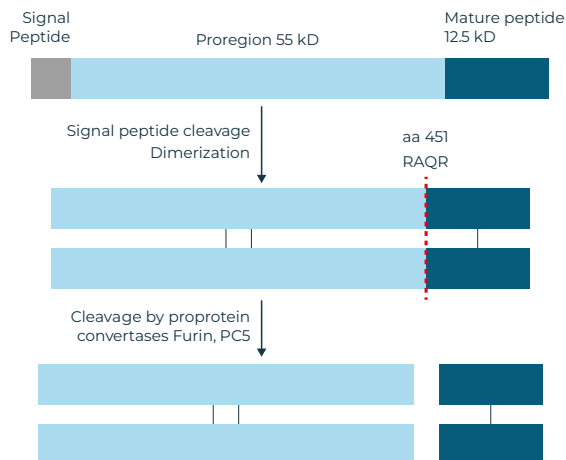
Accurate

Standard recombinant human AMH calibrators.



Specific

Specific to full length and cleaved complex forms of AMH.



Specific to human AMH (associated form)

Detects the full length and enhanced biologically active associated forms of human AMH.

Unique mAbs developed against specific linear epitopes on the associated dimers of AMH

Specificity and consistency of AMH detection.

Standardized recombinant human AMH calibrators

Ensure accuracy and reproducibility assay-to-assay and lot-to-lot.

Analytical measurable range of approximately 0.08-14.2 ng/mL

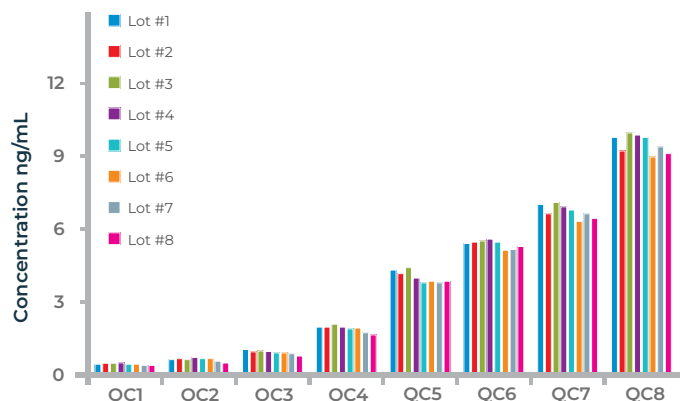
Wide dynamic range reduces repeat testing of samples.

Sensitive to ~23 pg/mL

Improved detection rate in research studies of compromised gonadal function.

Reliable

Excellent precision and consistency of performance from assay-to-assay, lot-to-lot and lab-to-lab.



AMH is a useful research tool in Reproductive Endocrinology studies related to:

- Oncofertility
- Gonadotoxicity
- Menopause
- Cryptorchidism
- Premature ovarian aging
- Primary ovarian insufficiency
- Neonatal gender determination
- Testicular (Leydig/Sertoli cell) function
- Polycystic Ovarian Morphology

ELISA 96 Wells

Method	Quantitative 3-step sandwich type immunoassay
Incubation Time	Total 2.5 hour incubation at room temperature
Approximate Dynamic Range	6 points, 0.08-14.2 ng/mL
Sensitivity	0.023 ng/mL
Sample Size / Type	25 µL / Serum
Shelf-life	24 months
Catalog Number	AL-105 [CE]

Related Assays

AMH, Dried Blood Spot	96-Well ELISA	AL-129 [CE]
picoAMH (RUO)	96-Well ELISA	AL-124-r [RUO]
MenoCheck picoAMH	96-Well ELISA	AL-124 [FDA,CE]
PCOCheck AMH	96-Well ELISA	AL-196 [CE]
Inhibin B	96-Well ELISA	AL-107 [CE]

*Unless otherwise stated here, in our catalog, or other product documentation, these kits are intended for research use only and not for in vitro diagnostic purposes or therapeutic uses.

POS.105.1222.USINTL

Reproductive Function

- Activin A [CE]
- Activin B
- Activin AB
- AFP
- AMH [CE]
- AMH, Dried Blood Spot [CE]
- AMH (PCOCheck™) [CE]
- picoAMH (MenoCheck®) [FDA, CE]
- BMP-15
- Estriol [FDA, CE]
- Follistatin
- Follistatin Like-3 (FSTL-3)
- FSH [FDA]
- FSH, Dried Blood Spot
- GDF-9
- GDF-9/BMP-15 Complex
- GDF-15 (Total)
- GDF-15 (H-Specific)
- Inhibin, Total
- Inhibin A [FDA, CE]
- picoInhibin A
- Inhibin A (OMQCheck™)
- Inhibin B [CE]
- Inhibin B, Ultra-Sensitive [CE]
- LH [FDA]
- LH, Dried Blood Spot
- PAPP-A2 [CE]
- picoPAPP-A [CE]
- PLGF [CE]
- Prolactin [FDA, CE]
- Prolactin, Dried Blood Spot [CE]
- Testosterone

Specialty Controls

- AnshCheck AMH Tri-Level Controls [FDA, CE]
- AnshCheck Inhibin B Tri-Level Controls
- AnshCheck Maternal Screening Bi-Level Controls [FDA, CE]

Metabolism

- C-Peptide of Insulin
- Glicentin
- GLP-1
- GLP-2
- Glucagon [FDA, CE]
- Major Proglucagon Fragment (MPGF)
- Oxyntomodulin
- Proglucagon

Growth Factors

- IGF-I, Free
- IGF-I, Total [FDA, CE]
- IGF-II
- IGFBP-2
- IGFBP-3, Intact
- IGFBP-3, Total
- IGFBP-4, Intact
- IGFBP-4, Total
- IGFBP-5
- picoIL-6
- Stanniocalcin 2

Species Specific Assays

- Activin B - Mouse
- AMH - Bovine, Canine, Equine, Mouse, Ovine, Porcine, Rat
- IGF-I, Free - Mouse, Rat
- IGF-I, Total - Mouse, Rat
- Inhibin A - Canine, Equine, Rodent
- Inhibin B - Canine, Equine, Rodent
- Oxyntomodulin - Mouse, Rat
- PAPP-A - Mouse

Neuronal Disorders

- MBP

**Unless stated otherwise, products are for research use only.

Customer Relations

281.404.0260, Ext. 263
sales@anshlabs.com

445 Medical Center Blvd.
Webster, Texas 77598 USA



Call us today, or visit us at [AnshLabs.com](https://www.anshlabs.com) to see what's new in our lab.

Copyright ©2023 Ansh Labs. All rights reserved.



ISO 13485:2016

Ansh Labs is ISO certified for the design, development, manufacturing, services and distribution of reagents/immunoassay kits for research and in-vitro diagnostic applications.